

# TH TEMPERATURE SENSOR

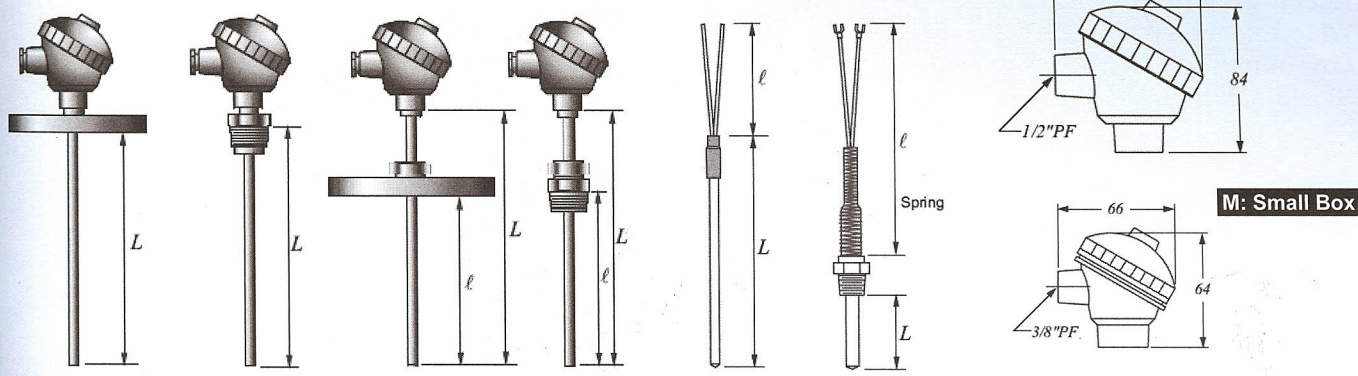
Standard Flange (FF)

Adjustment Flange (FA)

Adjustment Screw (SA)

Economic (EN)

Economic Spring (ES)



## SPECIFICATION

CLASS	Wire Diameter	TEMPERATURE		THERMO-WELL		
		Normal Temp	Max. Temp	Material	Non-Material	
K Type	A: ANSI-SP	3.2	1000°C	1200°C	21.7x16.1	17x13
	±1.1°C or 0.4°C	2.3	900°C	1100°C	21.7x16.1	17x13
	B: ANSI-SDT	1.6	850°C	1050°C	15x11	15x11
		±2.2°C or 0.75°C	1.0	750°C	950°C	12x9
E Type	0.65	650°C	850°C	10x7	10x6	
	1.6	550°C	650°C	15x11	X	
	1.0	500°C	550°C	12x9	X	
	0.65	450°C	500°C	10x7	X	
J Type	0.32	300°C	400°C	10x7	X	
	2.3	550°C	750°C	21.7x16.1	17x13	
	1.6	500°C	650°C	15x11	15x11	
	1.0	450°C	550°C	12x9	15x11	
T Type	0.65	400°C	500°C	10x7	10x6	
	1.6	300°C	350°C	15x11	X	
	1.0	250°C	300°C	12x9	X	
	0.65	200°C	250°C	10x7	X	
B Type	0.32	200°C	250°C	10x7	X	
	0.5	1500°C	1700°C	X	15x11	
R Type	0.5	1400°C	X	X	15x11	
S Type	0.5	1400°C	X	X	15x11	
Pt100Ω	DIN 4370-79	8.0	L: -200~+100°C			
	A: ±(0.15+0.002  t )	6.4	M: 0~+350°C			
		4.8	H: 0~+650°C			
	B: ±(0.3+0.005  t )	3.2				
		1.6				
		1.0				
	0.5					

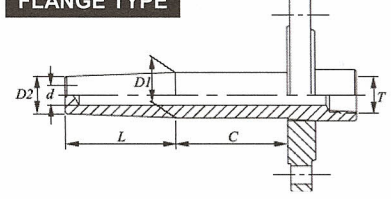
### Electrical

Isolation Resistance: 1000MΩ/500Vdc

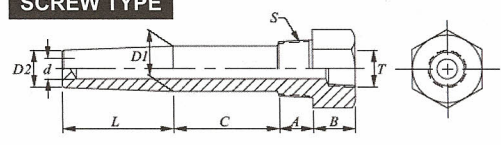
### Mechanical

**Material:** Tube, Connection: St. Steel 316  
Head: Aluminum case  
**Tube Diameter:** 3.2, 4.8, 6.4, 8.0, 9.0, 12.75 mm  
**Connection:** 1/4", 3/8", 1/2" NPT or PT male; 5.0Kg/cm<sup>2</sup>  
Adjustment connection or Flange available  
**Thermo-Well:** 1/4", 3/8", 1/2" NPT or PT male  
Flange available

### FLANGE TYPE



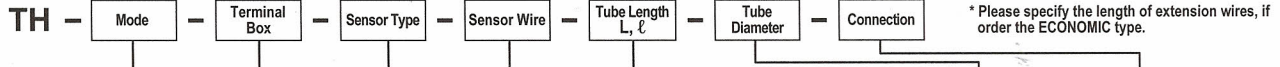
### SCREW TYPE



### Economic Type

**Lead Wire Type:** PVC, Teflon..., Please specify  
**Wire Length:** Specify

## ORDER INFORMATION



CODE	MODE	CODE	TERMINAL	CODE	SENSOR TYPE	CODE	SENSOR WIRE	CODE	LENGT	CODE	DIAMETER	CODE	CONNECTION
FF	Standard Flange	B	Big Box	K	Type K	800	8.0mm	L	ℓ	3	3.2 mm	P2	1/4" PT
FA	Adjustment Flange	M	Small Box	J	Type J	640	6.40mm	03	03	4	4.8 mm	P3	3/8" PT
SF	Standard Screw	N	None Box	E	Type E	480	4.8mm	04	04	6	6.4 mm	P4	1/2" PT
SA	Adjustment Screw	S	Single Element	T	Type T	320	3.2mm	05	05	8	8.0 mm	N2	1/4" NPT
EN	Economic	D	Dual Elements	R	Type R	230	2.3mm	06	06	9	9.0 mm	N3	3/8" NPT
ES	Economic Spring			S	Type S	160	1.6mm	08	08	C	12.75 mm	N4	1/2" NPT
				B	Type B	100	1.0mm	10	10	O	Specify	N	None
				PL	Pt100 -200~+100°C	065	0.65mm	12	12			O	Specify
				PM	Pt100 0~+350°C	050	0.50mm	15	15				
				PH	Pt100 0~+650°C	032	0.32mm	20	20				
								25	25				
								30	30				
								40	40				
								LO	LO				

TH Temp. Sensor