

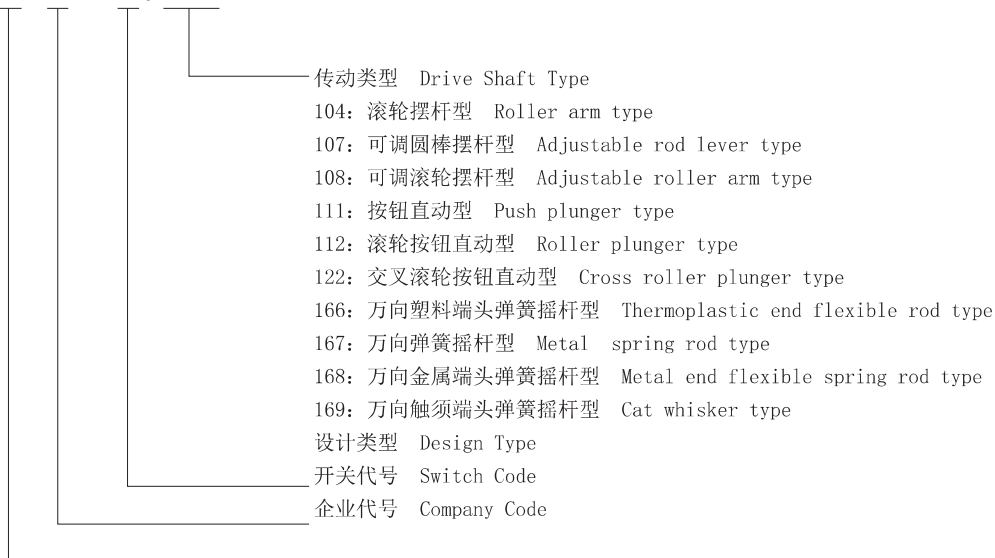
- 外壳由强化塑胶与锌合金组成，结构坚固，容易配线；
- 体积小，可防水、防油；
- 采用双回路形式，内置双簧片微动开关；
- 配备各种形式的驱动连杆；
- 广泛应用于各种机械设备、自动化设备、仪器仪表等领域。

- Strong structure, made of zinc metal alloy and plastics, easy to contact line;
- Small size, water and oil resistant;
- Double way switch, double spring inner switch;
- Variety of levers;
- Widely used in Mechanical equipment, automatic machine, and instrument, electro motion tool etc.

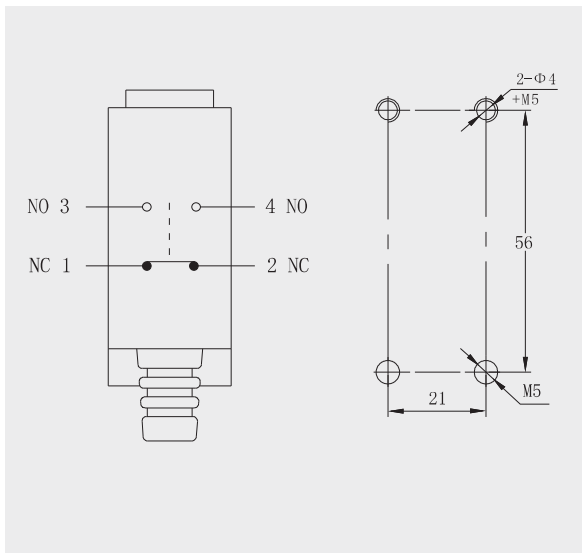


### □ 型号含义 Model & Meanings

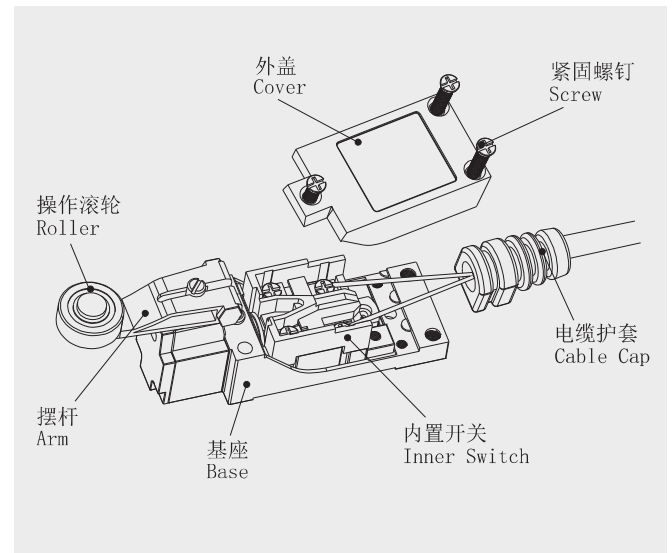
X Z - 8 / 104



### □ 安装孔尺寸及触点形式 Mounting Holes & Contact Form



### □ 产品结构图 Product Structure



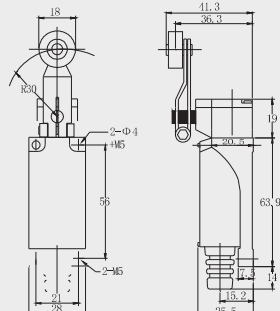
### □ 性能参数 Specification

项 目 Item			参数值 Data
额定负荷 Rating load			5A/250VAC
操作速度 Operation speed			5mm-50cm/s
操作频率 Operation frequency	机 械 Mechanical		120次/分 120times/min
	电 气 Electrical		30次/分 30times/min
绝缘电阻 Insulation resistance			100mΩ 以上(Above) DC500V
接触电阻 Contact resistance			25mΩ 初值 initial value)
介质耐压 Withstand voltage	非 连 线 Non-connection wire		1000VAC
	各端子间 Every terminal		1500VAC
振 动 Vibration	误 动 作 Misoperation		10-55Hz 复振幅 Amplitude 1.5mm
冲 击 Impact	耐 久 Durable		1000m/s <sup>2</sup>
	误 动 作 Misoperation		300m/s <sup>2</sup>
寿 命 Life	电 气 Electrical		100,000次以上 above
	机 械 Mechanical		1,000,000次以上 above
防护等级 Protection degree			IP65
使用温度 Operating temperature			-20~+60℃
使用湿度 Operating humidity			<85%

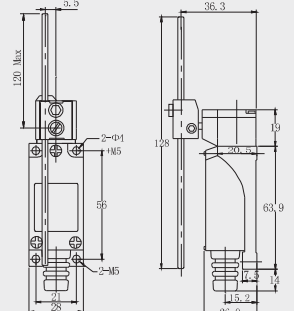
### □ 外形尺寸/动作特性 Dimensions/Operating Characteristics

形式 Models	XZ-8/104	XZ-8/107	XZ-8/108	XZ-8/111	XZ-8/112	XZ-8/122	XZ-8/166	XZ-8/167	XZ-8/168	XZ-8/169
动作力 OF max.	700g (6.86N)	700g (6.86N)	800g (7.84N)	1100g (10.78N)	1100g (10.78N)	1100g (10.78N)	1000g (9.8N)	1000g (9.8N)	1000g (9.8N)	1000g (9.8N)
回复力 RF min.	60g (0.59N)	70g (0.69N)	60g (0.59N)	250g (2.45N)	250g (2.45N)	250g (2.45N)				
预行程 PI max.	30°	30°	30°	2mm	2mm	2mm	30mm	30mm	30mm	30mm
超行程 OT min.	60°	60°	60°	0.6mm	0.6mm	0.6mm				
差行程 MD max.	15°	15°	15°	1mm	1mm	1mm				
动作位置 OP				26±0.8mm	37±0.8mm	37±0.8mm				
总行程 TT	90°	90°	90°							

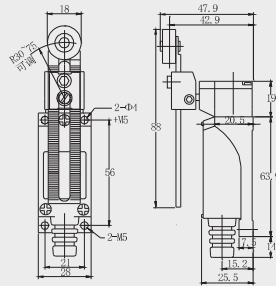
·滚轮摆杆型  
XZ-8/104



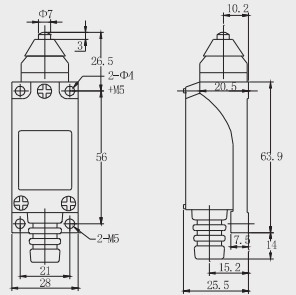
·可调圆棒摆杆型  
XZ-8/107



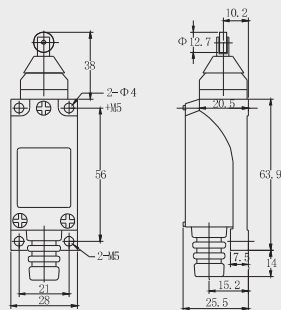
·可调滚轮摆杆型  
XZ-8/108



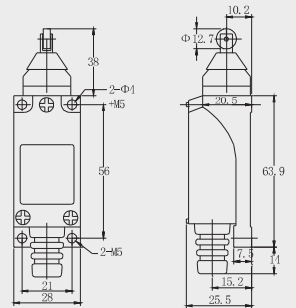
·按钮型  
XZ-8/111



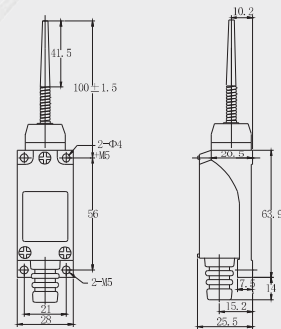
·滚轮按钮型  
XZ-8/112



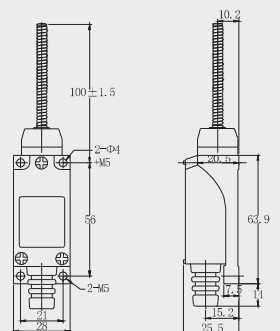
·交叉滚轮按钮型  
XZ-8/122



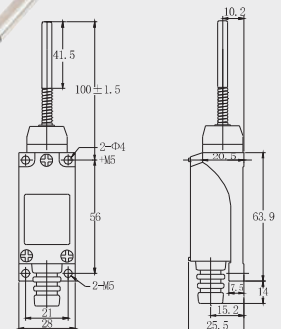
·万向式塑料端头弹簧摇杆型  
XZ-8/166



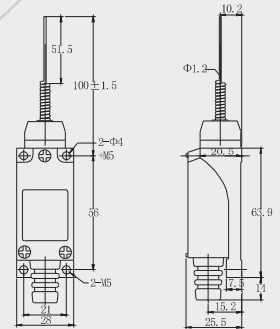
·万向式弹簧摇杆型  
XZ-8/167



·万向式金属端头弹簧摇杆型  
XZ-8/168



·万向式触须端头弹簧摇杆型  
XZ-8/169



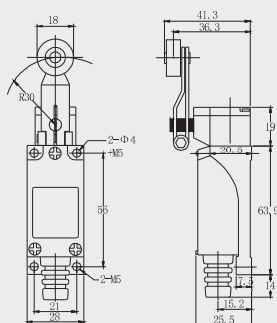
□ 性能参数 Specification

项 目 Item			参数值 Data
额定负荷 Rating load			5A/250VAC
操作速度 Operation speed			5mm-50cm/s
操作频率 Operation frequency	机 械 Mechanical		120次/分 120times/min
	电 气 Electrical		30次/分 30times/min
绝缘电阻 Insulation resistance			100mΩ 以上 (Above) DC500V
接触电阻 Contact resistance			25mΩ 初值 initial value)
介质耐压 Withstand voltage	非 连 线 Non-connection wire		1000VAC
	各端子间 Every terminal		1500VAC
振 动 Vibration	误 动 作 Misoperation		10-55Hz 复振幅 Amplitude 1.5mm
冲 击 Impact	耐 久 Durable		1000m/s <sup>2</sup>
	误 动 作 Misoperation		300m/s <sup>2</sup>
寿 命 Life	电 气 Electrical		100,000次以上 above
	机 械 Mechanical		1,000,000次以上 above
防护等级 Protection degree			IP65
使用温度 Operating temperature			-20~+60℃
使用湿度 Operating humidity			<85%

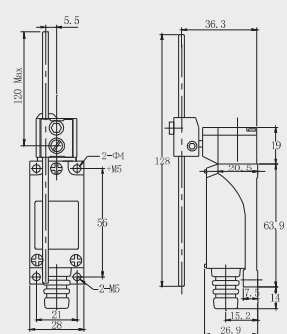
□ 外形尺寸/动作特性 Dimensions/Operating Characteristics

形式 Models	XZ-8/104	XZ-8/107	XZ-8/108	XZ-8/111	XZ-8/112	XZ-8/122	XZ-8/166	XZ-8/167	XZ-8/168	XZ-8/169
动作力 OF max.	700g (6.86N)	700g (6.86N)	800g (7.84N)	1100g (10.78N)	1100g (10.78N)	1100g (10.78N)	1000g (9.8N)	1000g (9.8N)	1000g (9.8N)	1000g (9.8N)
回复力 RF min.	60g (0.59N)	70g (0.69N)	60g (0.59N)	250g (2.45N)	250g (2.45N)	250g (2.45N)				
预行程 PI max.	30°	30°	30°	2mm	2mm	2mm	30mm	30mm	30mm	30mm
超行程 OT min.	60°	60°	60°	0.6mm	0.6mm	0.6mm				
差行程 MD max.	15°	15°	15°	1mm	1mm	1mm				
动作位置 OP				26±0.8mm	37±0.8mm	37±0.8mm				
总行程 TT	90°	90°	90°							

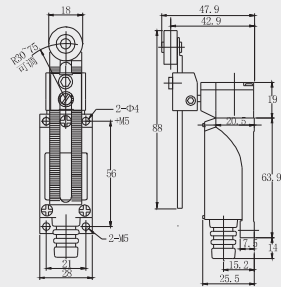
滚轮摆杆型  
XZ-8/104



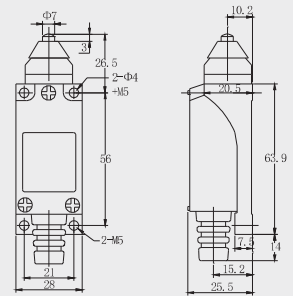
可调圆棒摆杆型  
XZ-8/107



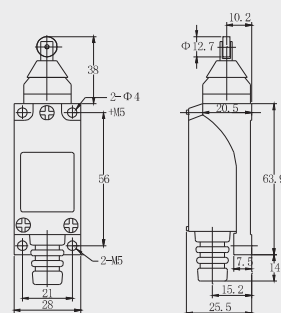
·可调滚轮摆杆型  
XZ-8/108



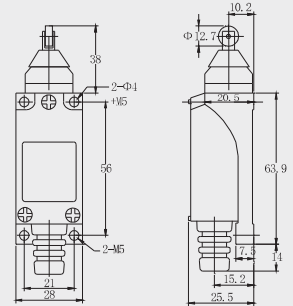
·按钮型  
XZ-8/111



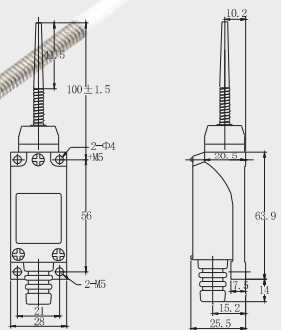
·滚轮按钮型  
XZ-8/112



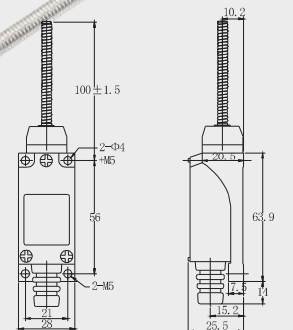
·交叉滚轮按钮型  
XZ-8/122



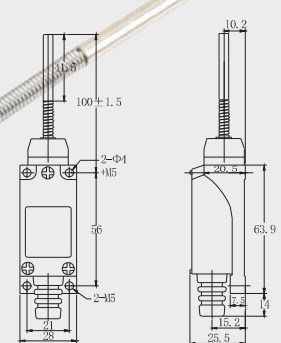
·万向式塑料端头弹簧摇杆型  
XZ-8/166



·万向式弹簧摇杆型  
XZ-8/167



·万向式金属端头弹簧摇杆型  
XZ-8/168



·万向式触须端头弹簧摇杆型  
XZ-8/169

